

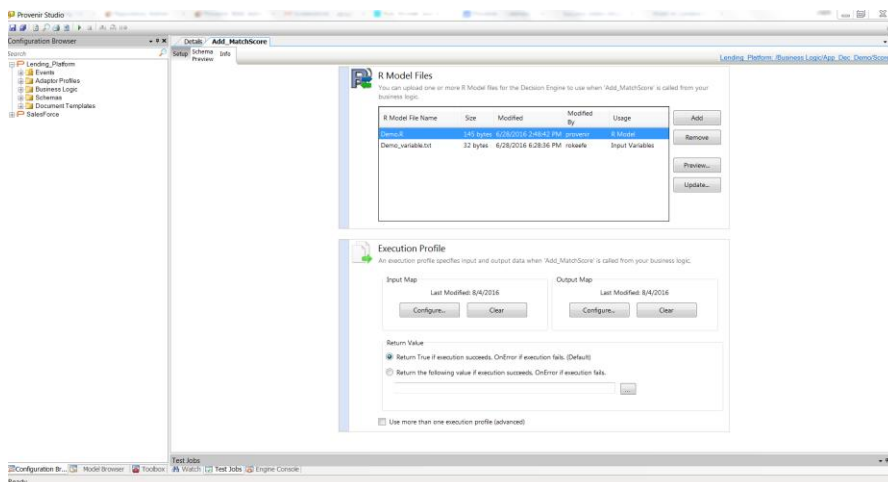
An Introduction to Operationalizing Analytics Models in Provenir

The Provenir Risk Decisioning Platform is unique in its ability to quickly and easily import multiple types of risk models so that they can be operationalized in automated decisioning processes. Because the integration is "model agnostic", simple and complex models and scorecards developed in third-party tools such as SAS, R, Python and Excel or exported using PMML or MathML can be imported, validated and mapped via easy-to-use wizards.

With Provenir, there is no need for programming, enabling models to be imported and operationalized in minutes. This exclusive capability extends the value of your investment in industry-standard modeling tools while ensuring that automated risk decisioning processes developed in Provenir are always using the most accurate and up-to-date risk models.

Here's a quick summary that shows just how easy it is to operationalize an R model.

Simply click Add to select a model from your system files and import it into Provenir. Provenir automatically validates the model's code and extracts the fields for mapping.



Open the model to visually configure the input and output mapping by dragging lines between the model's and Provenir's data fields. This creates Execution Profiles.

- Input mapping specifies the data from Provenir that will be used by the model to execute the analysis.
- Output mapping specifies the data to be returned to Provenir once the model has executed.

Provenir also provides options for managing the Execution Profile including how a returned value should be handled as well as using more than one Execution Profile with a model.

